

12500 Tukwila International Blvd.

12500 Tukwila Int'l Blvd
Tukwila, WA 98168

Secure, Light-Filled Office Space Minutes from SeaTac





A modern, never-occupied workspace with panoramic views, enhanced security, and exceptional regional access.



12500 Tukwila International Boulevard offers pristine, never-before-occupied office space in a highly accessible South Seattle location. Wide windows, high ceilings, and open floor plans fill the available suites with natural light, while shared tenancy with the Department of Homeland Security contributes to an active, secure operational environment. Immediate access to I-5, I-405, Highway 99, and SeaTac Airport supports efficient regional connectivity.

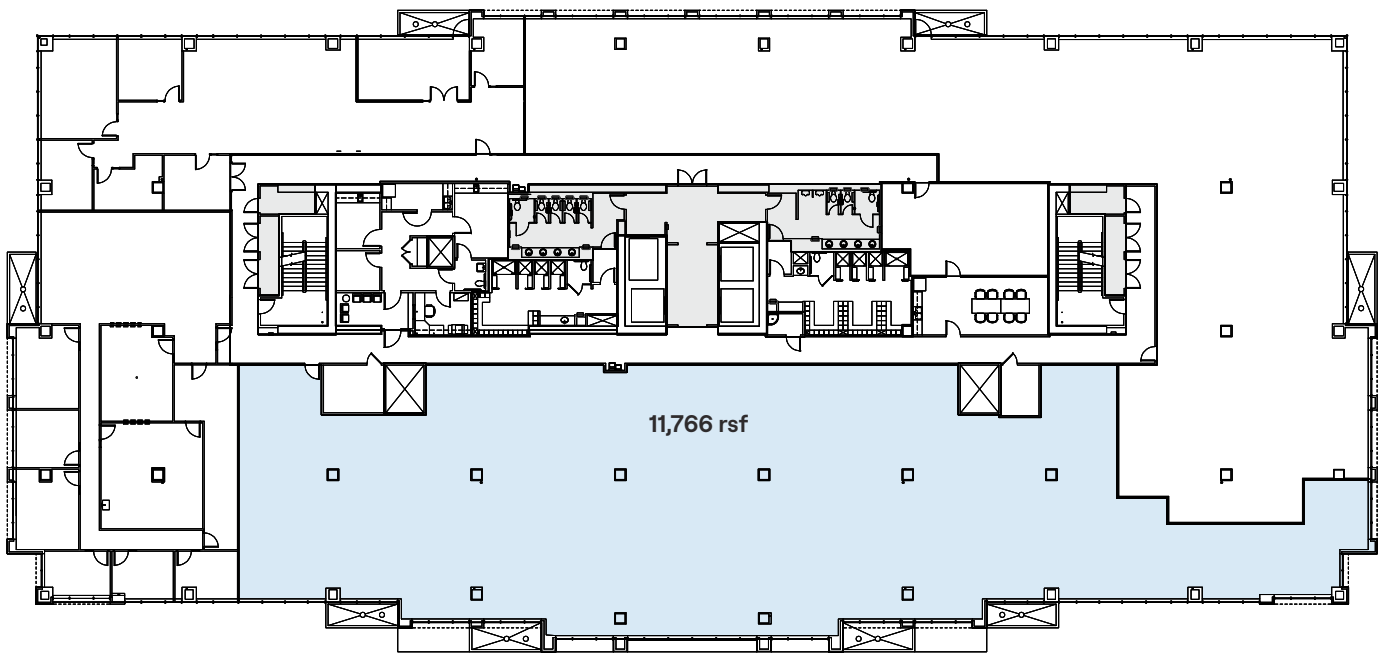
Highlights

- Pristine, never-before-occupied office space
- High ceilings and expansive windows providing abundant natural light
- Shared tenancy with the Department of Homeland Security contributing to an active, secure operational environment
- Private deck with panoramic views of downtown Seattle and the Cascades
- Freight elevator and secure on-site storage supporting operational flexibility
- Immediate access to I-5, I-405, Highway 99, and Boeing Access Road
- Five minutes from SeaTac Airport

Floor 3

Available Space - 11,766 rsf

-  Total Available Space
-  Common Area



Find Office & Flex Space
Across Our Portfolio

