

Mission-Critical Infrastructure at Manhattan's Civic Gateway





High-tech infrastructure adjacent to City Hall, the courts, and the Brooklyn Bridge with direct access to Lower Manhattan and Brooklyn.



375 Pearl Street is a fully renovated office and data center complex positioned at one of Manhattan's most important civic and transportation crossroads. Designed for organizations that demand reliability, capacity, and connectivity, the building combines mission-critical infrastructure with modern workspace and panoramic views. Its location at the foot of the Brooklyn Bridge provides exceptional access to Lower Manhattan, Downtown Brooklyn, and multiple subway lines.

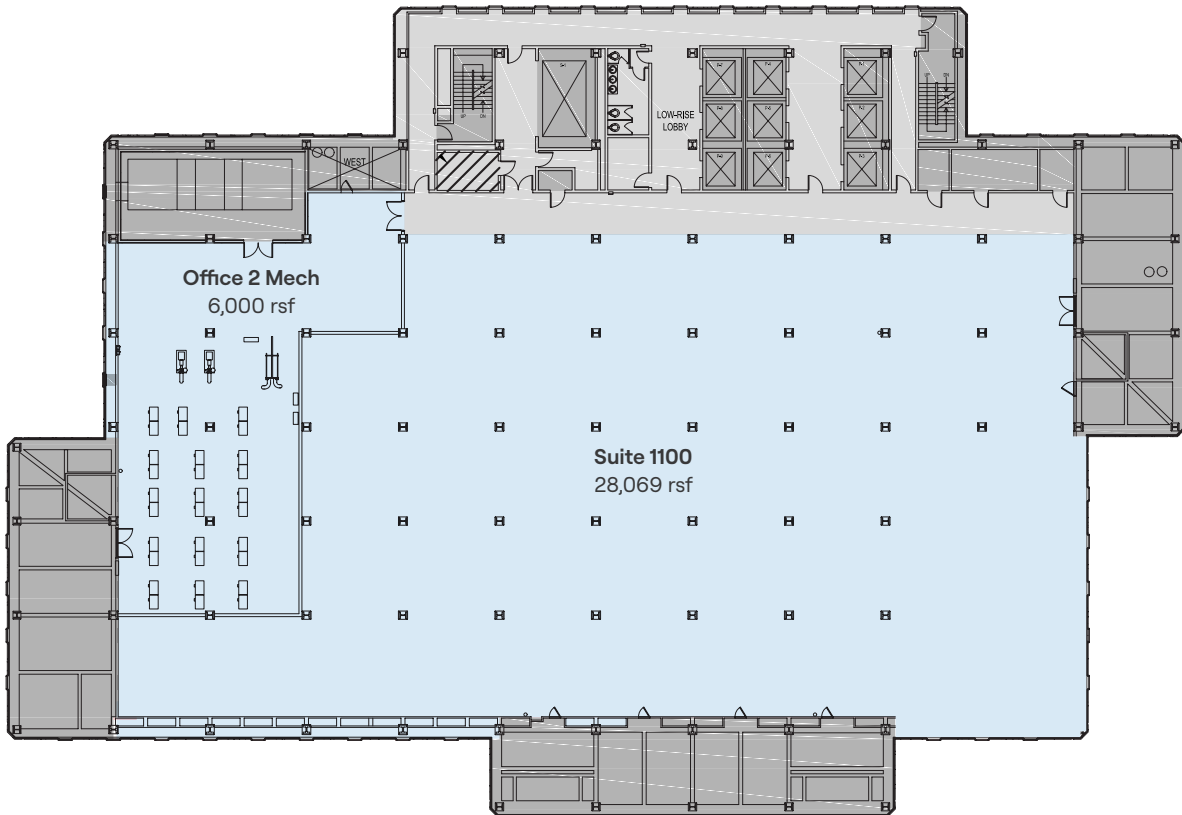
Highlights

- Mission-critical infrastructure supporting high-reliability operations
- Dual-use office and data center capability supported by dock-high loading and freight access
- Adjacent to City Hall, state and federal courts, and NYPD headquarters
- Gateway location at the foot of the Brooklyn Bridge
- Immediate access to Lower Manhattan and Downtown Brooklyn
- Multiple subway lines and direct transit connections
- Panoramic views of the Manhattan skyline and waterfront

Floor 11

Available Space - 34,069 rsf

-  Total Available Space
-  Common Area



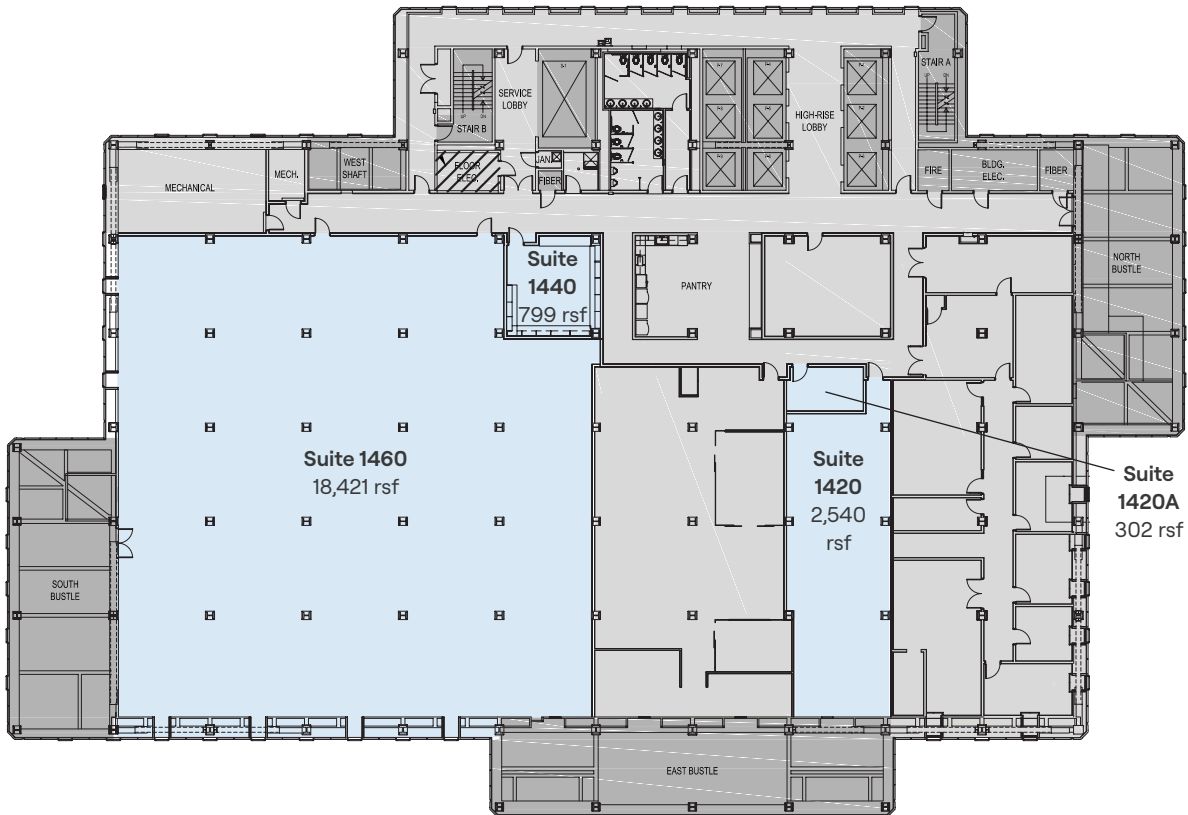
Find Office & Flex Space
Across Our Portfolio



Floor 14

Available Space - 22,062 rsf

- Total Available Space
- Common Area



Find Office & Flex Space
Across Our Portfolio

