

A Full-Block Presence at the Center of Seattle's Energy





High-quality office and flex space near Amazon and the core of downtown Seattle.

6th & Wall occupies an entire city block in one of Seattle's most active and rapidly evolving neighborhoods. With immediate proximity to Amazon, downtown Seattle, and major transportation corridors, the building offers both visibility and convenience. A recently remodeled lobby and soaring central atrium create a strong first impression, while large, efficient floor plates and heavy live-load capacity support a wide range of uses.





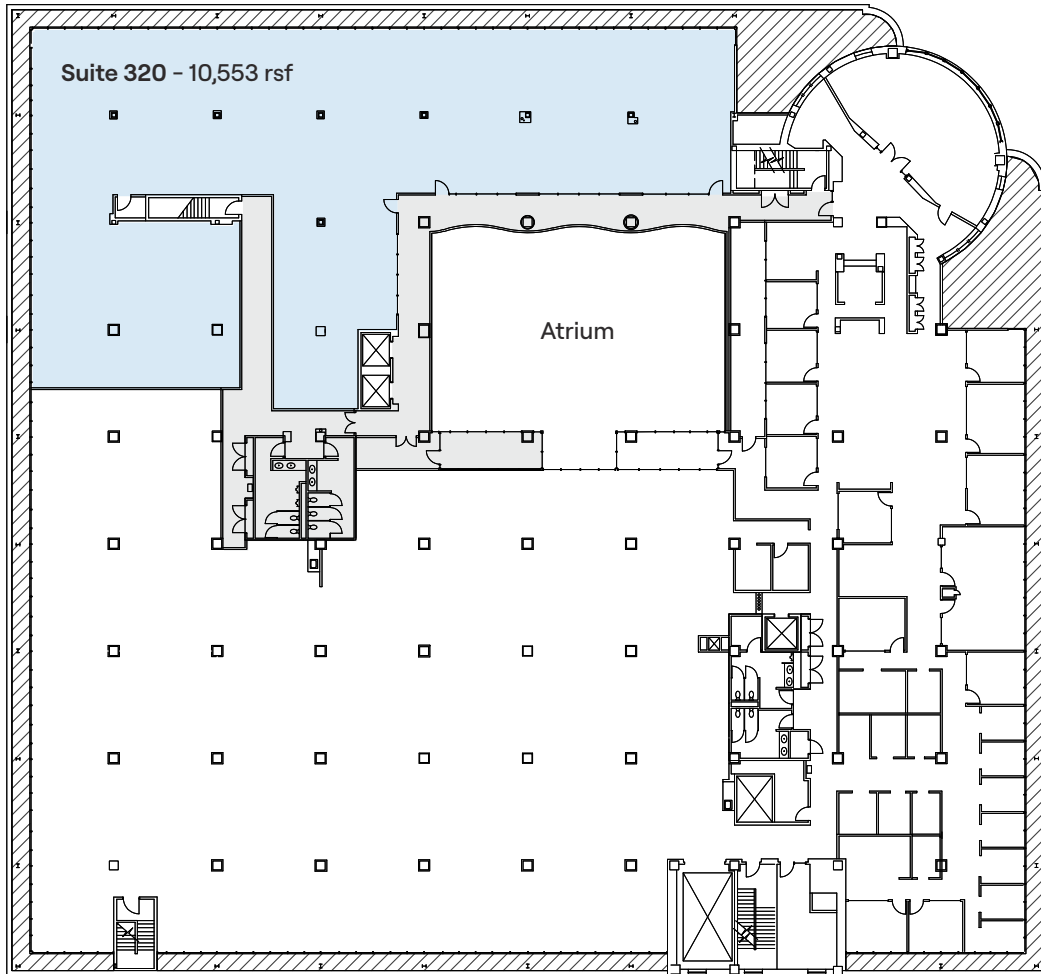
Highlights

- Large, efficient floor plates supporting office and flex occupancy uses
- Heavy live-load capacity supporting flex occupancy
- Large freight elevator supporting equipment moves and flexible buildouts
- Recently remodeled lobby with soaring central atrium
- Immediate proximity to Amazon and downtown Seattle
- Direct access to I-5, SR-520, and Highway 99
- Convenient access to regional transit and major transportation routes

Floor 3

Available Space - 10,553 rsf

-  Total Available Space
-  Common Area



Find Office & Flex Space
Across Our Portfolio

