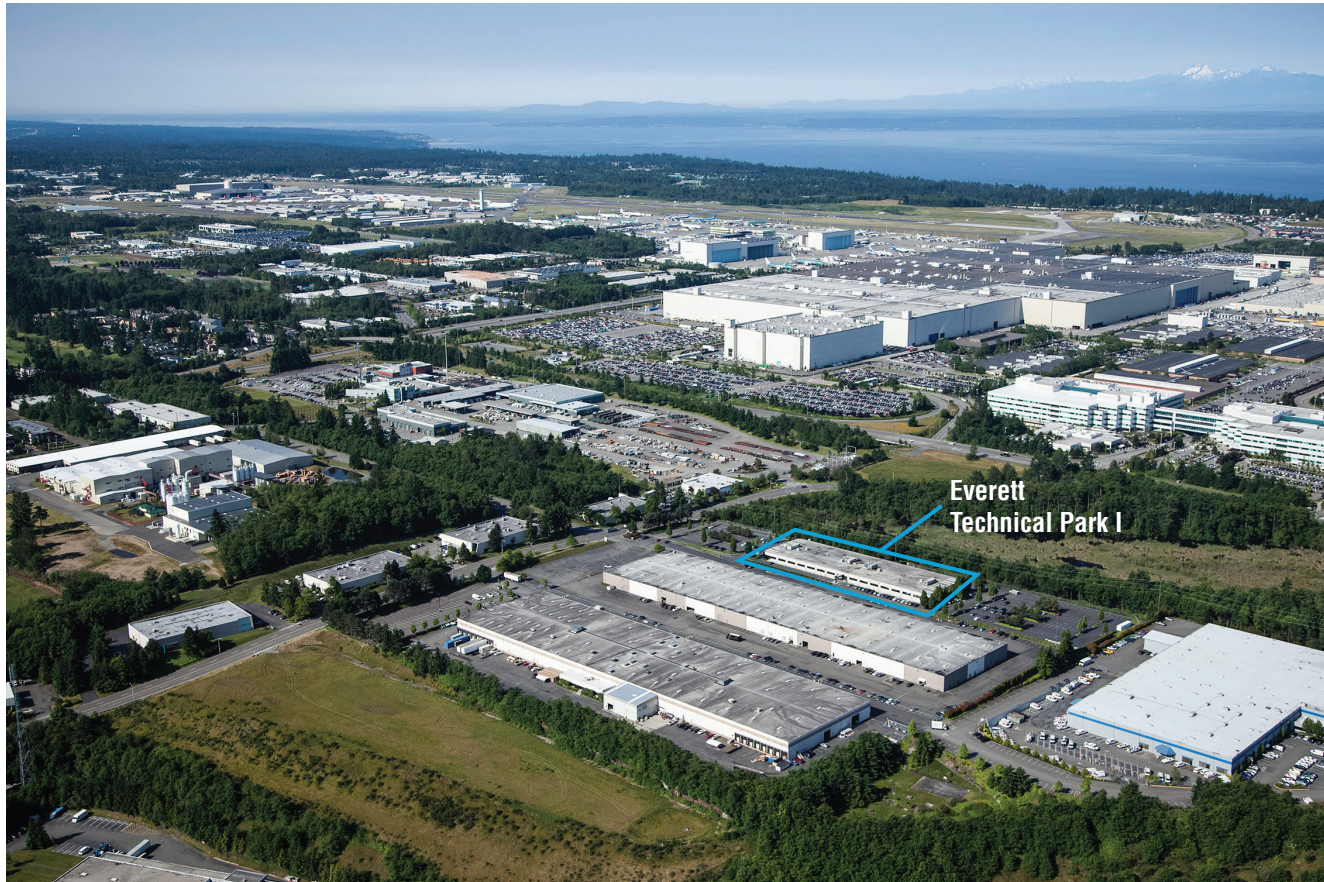


# Everett Technical Park I

1615 75<sup>th</sup> St SW, Everett, WA 98203

**TOTAL AVAILABLE SPACE – 38,489 RSF**

**SUITE 110 – 21,207 RSF    SUITE 200 – 17,282 RSF**



**LOCATED IN THE HEART OF THE PACIFIC NORTHWEST'S  
BOOMING COMMERCIAL AERONAUTICS INDUSTRY**



visit us at [sabey.com](https://www.sabey.com)

Joe Sabey  
[joes@sabey.com](mailto:joes@sabey.com)  
206.281.8700

Clete Casper  
[cletec@sabey.com](mailto:cletec@sabey.com)  
206.277.5229



12201 Tukwila International Blvd. 4th Floor  
Seattle, WA 98168

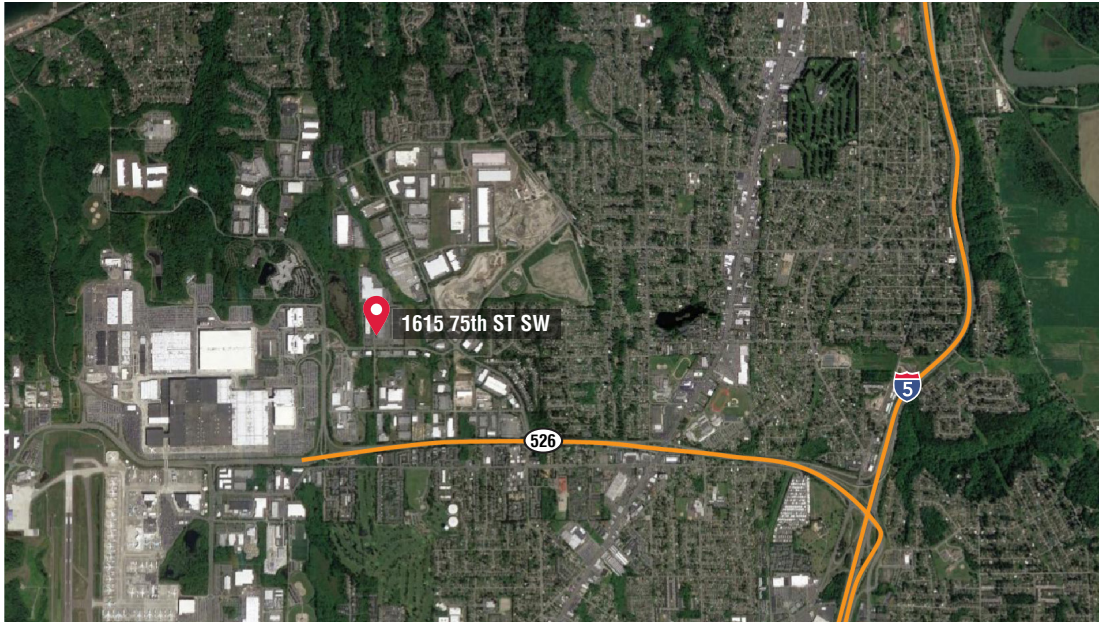


# Everett Technical Park I

1615 75<sup>th</sup> St SW, Everett, WA 98203

**TOTAL AVAILABLE SPACE – 38,489 RSF**

**SUITE 110 – 21,207 RSF    SUITE 200 – 17,282 RSF**



Sabey's Everett properties, Everett Technology Campus I and Everett Technology Campus IV (Build to Suit) are both located in the heart of the Pacific Northwest's booming commercial aeronautics industry and immediately adjacent to Boeing's 747 and 787 manufacturing facilities. The sites have excellent access to transportation corridors. Please click on the respective links for additional information. Everett Technical Park I is a 95,000 sf 2 story building located in the heart of the Everett industrial hub. Only minutes from the Boeing complex with excellent access to transportation corridors. Ideally suited for office, call center, education/training, the building is supplied with ample electricity and fiber connectivity. Generous column spacing of 24' x 27' on the first floor and 24' x 54' on the second provide maximally efficient layout options. Generous parking.

#### Highlights

- Two story building offering high quality office multi-purpose space.
- Ample Electrical Capacity
- Either space is divisible into smaller suites.
- Fiber Connectivity
- Strategically located just 25 minutes North of Seattle and two blocks East of the Boeing facility with easy access to I-5 and SR-526
- Abundant Parking



**AMPLE  
ELECTRICITY &  
FIBER CONNECTIVITY**



visit us at [sabey.com](https://www.sabey.com)

Joe Sabey  
[joes@sabey.com](mailto:joes@sabey.com)  
206.281.8700

Clete Casper  
[cletec@sabey.com](mailto:cletec@sabey.com)  
206.277.5229



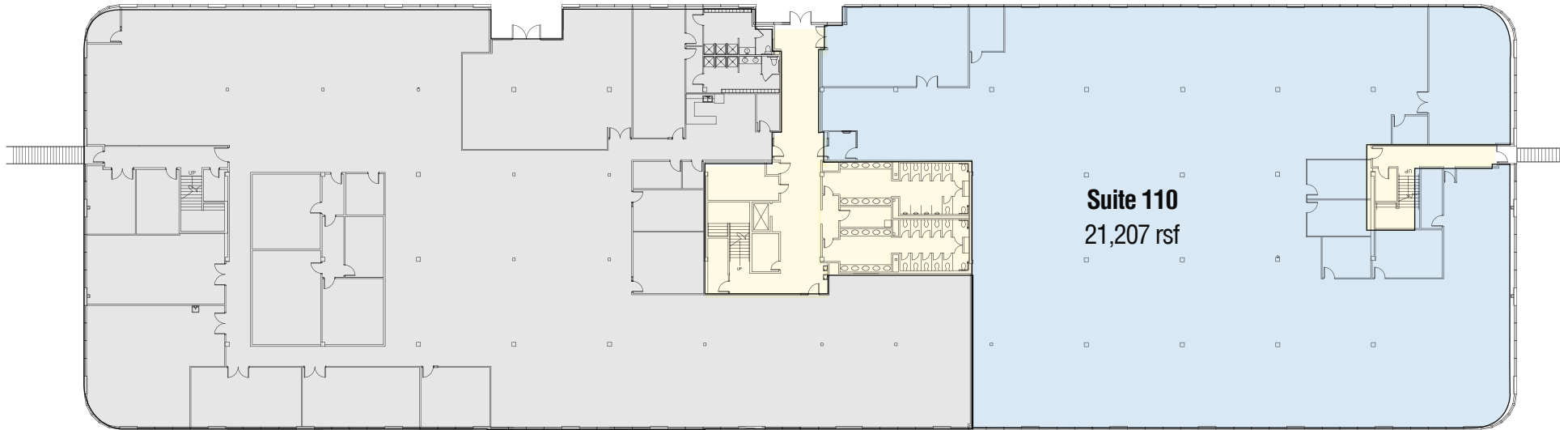
12201 Tukwila International Blvd. 4th Floor  
Seattle, WA 98168

# Everett Technical Park I

1615 75<sup>th</sup> St SW, Everett, WA 98203

**TOTAL AVAILABLE SPACE – 38,489 RSF**

**SUITE 110 – 21,207 RSF    SUITE 200 – 17,282 RSF**



**Floor 1** | Available space - 21,207 rsf

 Total Available Space     Common Area



visit us at [sabey.com](https://www.sabey.com)

Joe Sabey  
[joes@sabey.com](mailto:joes@sabey.com)  
206.281.8700

Clete Casper  
[cletec@sabey.com](mailto:cletec@sabey.com)  
206.277.5229



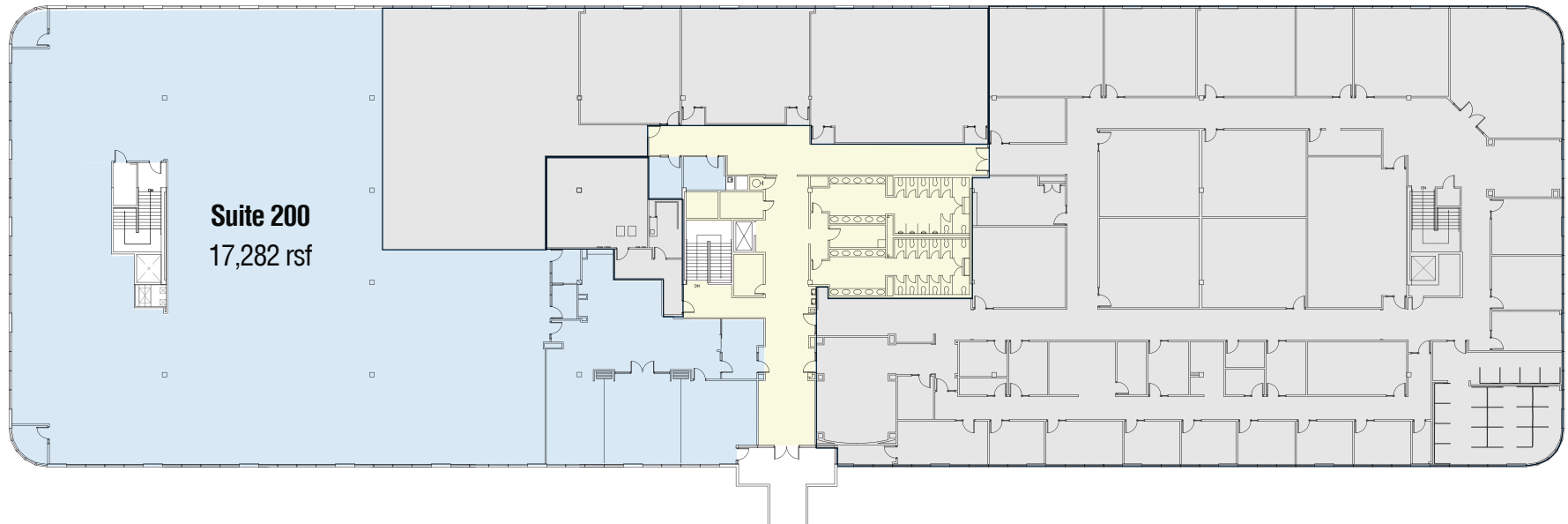
12201 Tukwila International Blvd. 4th Floor  
Seattle, WA 98168

# Everett Technical Park I

1615 75<sup>th</sup> St SW, Everett, WA 98203

**TOTAL AVAILABLE SPACE – 38,489 RSF**

**SUITE 110 – 21,207 RSF    SUITE 200 – 17,282 RSF**



**Floor 2 | Available space - 17,282 rsf**

■ Total Available Space    ■ Common Area    ■ Leased Space



visit us at [sabey.com](https://www.sabey.com)

Joe Sabey  
[joes@sabey.com](mailto:joes@sabey.com)  
206.281.8700

Clete Casper  
[cletec@sabey.com](mailto:cletec@sabey.com)  
206.277.5229



12201 Tukwila International Blvd. 4th Floor  
Seattle, WA 98168