

# Intergate East Campus - Building A

12401 East Marginal Way S., Seattle, WA 98168

**TOTAL AVAILABLE SPACE – 19,289 RSF**



Matterport 3D virtual tour:  
<https://sabey.com/12501a>

**INTERGATE EAST CAMPUS - HIGH EFFICIENCY ENVIRONMENT  
PERFECT FOR FLEX-TECH AND LIGHT MANUFACTURING**



visit us at  
[sabey.com](https://sabey.com)

Joe Sabey  
[joes@sabey.com](mailto:joes@sabey.com)  
206.281.8700

Clete Casper  
[cletec@sabey.com](mailto:cletec@sabey.com)  
206.277.5229



12201 Tukwila International Blvd. 4th Floor  
Seattle, WA 98168



# Intergate East Campus - Building A

## 12401 East Marginal Way S., Seattle, WA 98168

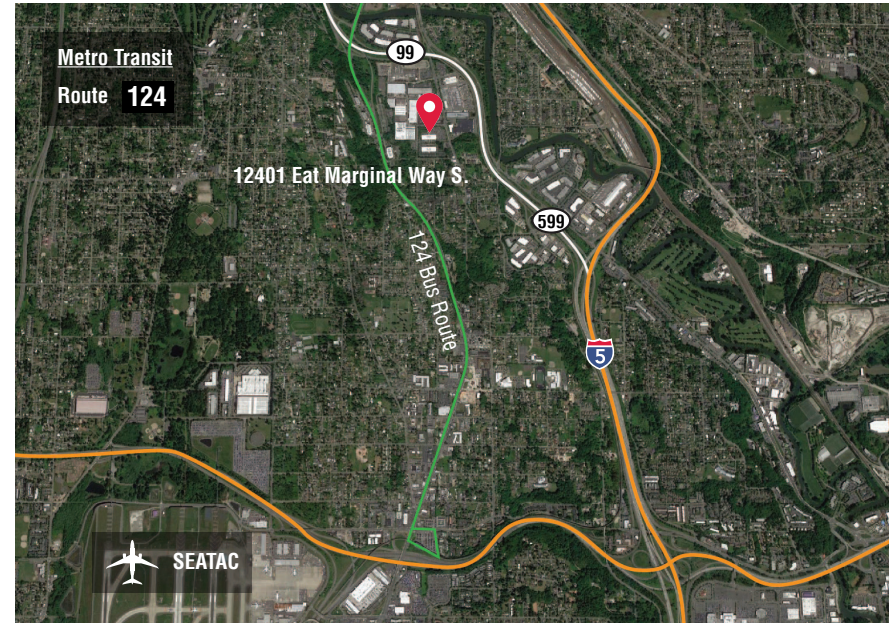
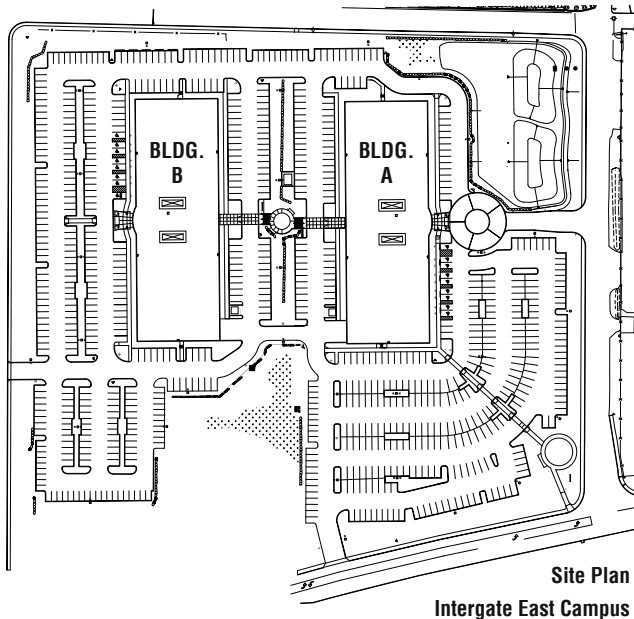
**TOTAL AVAILABLE SPACE – 19,289 RSF**



### HIGH QUALITY OFFICE MULTI-PURPOSE SPACE

#### Highlights

- Each building is 83,414 sf rentable
- Well-appointed reception area and elevator lobbies
- Three stairwells with one passenger elevator
- Spacious cafeteria and dining room
- Floor to ceiling heights – 10'
- Generous column spacing – 31' x 30'
- Large floor plates
- Low operating costs
- Ample free parking
- Great accessibility



Two 2-story buildings on private 12 acre campus setting. Surrounded by lush, mature landscaping. Sidewalks, stairs and outdoor seating area connect the buildings. Graceful porticoes define and shelter the entrances of each. Ample surface parking on campus. Signage options available.



visit us at  
sabey.com

Joe Sabey  
joes@sabey.com  
206.281.8700

Clete Casper  
cletec@sabey.com  
206.277.5229



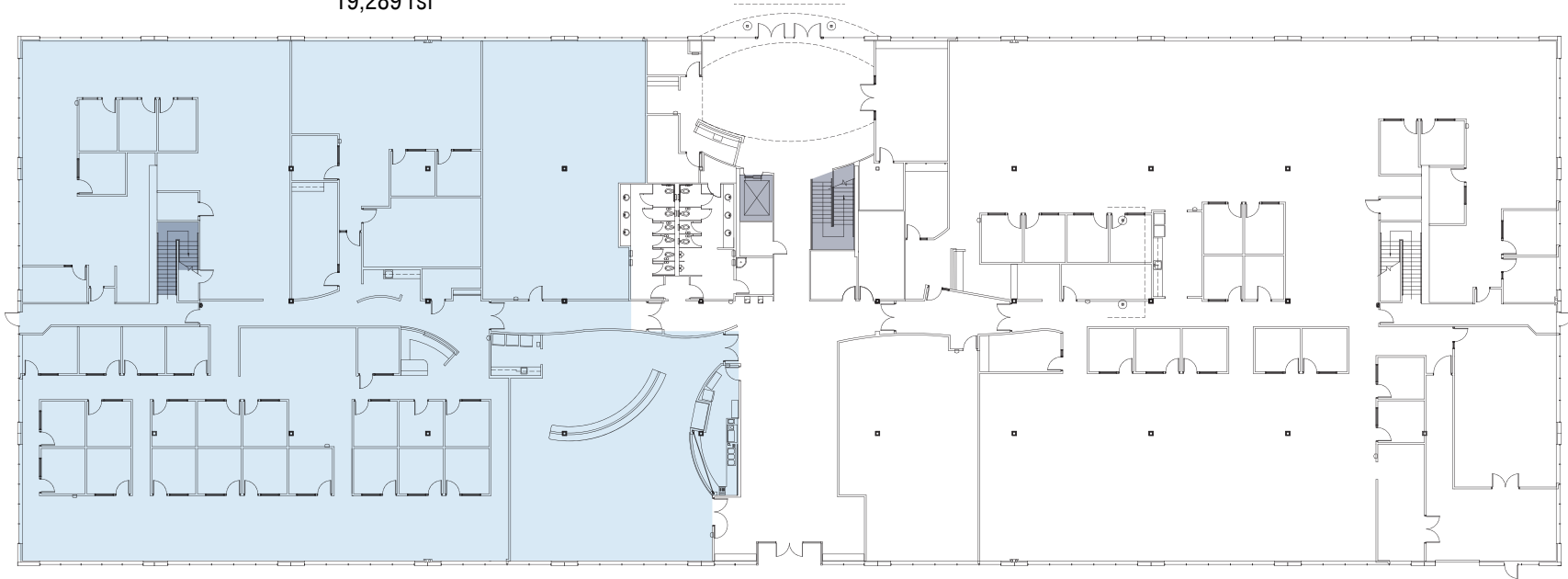
12201 Tukwila International Blvd. 4th Floor  
Seattle, WA 98168

# Interigate East Campus - Building A

12401 East Marginal Way S., Seattle, WA 98168

**TOTAL AVAILABLE SPACE – 19,289 RSF**

**Suite 110**  
19,289 rsf



**Floor 1** | Available space - 19,289 rsf

■ Total Available Space: 19,289 rsf    ■ Vertical Penetrations    ■ Common Area



visit us at  
sabey.com

Joe Sabey  
joes@sabey.com  
206.281.8700

Clete Casper  
cletec@sabey.com  
206.277.5229



12201 Tukwila International Blvd. 4th Floor  
Seattle, WA 98168