

James Tower

550 17th Avenue Seattle WA 98122

TOTAL AVAILABLE SPACE – 4,558 RSF

SUITE 240 - 3,459 RSF

SUITE 235 - 1,099 RSF

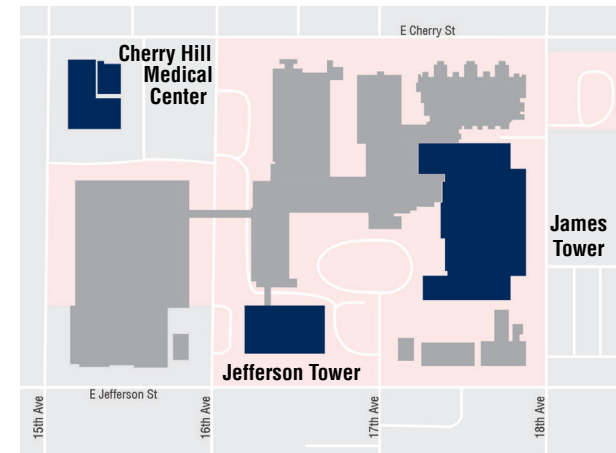


James Tower

ON-CAMPUS MEDICAL OFFICE SPACE

James Tower Life Sciences Building is part of the Swedish Medical Center Cherry Hill campus, adjacent to Seattle University and just a few blocks from Harborview and Virginia Mason Hospitals and Swedish Medical Center at First Hill. James Tower, a beautiful renovation of the historic 1910 Providence Hospital, is occupied by some of the most advanced medical services in the world.

Just five minutes from downtown, James Tower offers spectacular panoramic views of Elliott Bay, Downtown Seattle and the Cascade Mountain Range. It is easily reached via the main venues of I-5, I-90, and 23rd Avenue.



Cherry Hill Campus Map



visit us at sabey.com

Clete Casper
cletec@sabey.com
206.277.5229

Joe Sabey
joes@sabey.com
206.281.8700



12201 Tukwila International Blvd. 4th Floor
Seattle, WA 98168

James Tower

550 17th Avenue Seattle WA 98122

TOTAL AVAILABLE SPACE – 4,558 RSF

SUITE 240 - 3,459 RSF

SUITE 235 - 1,099 RSF



JAMES TOWER

Cherry Hill Campus

550 17th Avenue Seattle WA 98122

Highlights

- A six-story 308,000 square foot facility with Class A finishes
- Secure “OnCampus” medical office building space
- Large floor loading capacity, mechanical shafts and enhanced power capacity
- Access to conference rooms, auditorium, and cafeteria
- Full-service Starbucks on premises
- Ample parking

Awards

- Office Development of the Year by SIOR 2006
- Redevelopment/Renovation of the Year by NAIOP 2005

**PLUG AND
PLAY SPACE AVAILABLE**



visit us at sabey.com

Clete Casper
cletec@sabey.com
206.277.5229

Joe Sabey
joes@sabey.com
206.281.8700



12201 Tukwila International Blvd. 4th Floor
Seattle, WA 98168




James Tower

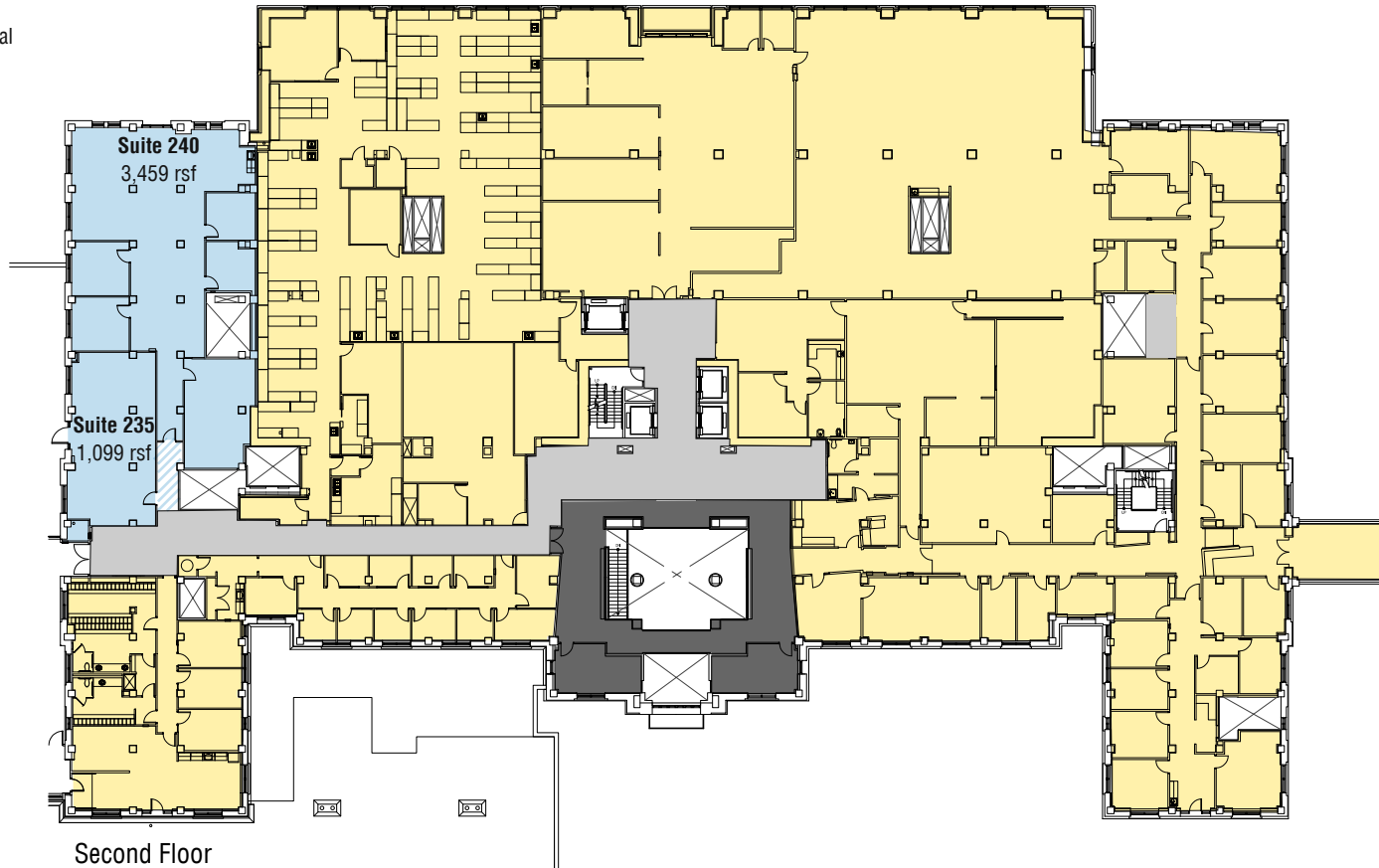
550 17th Avenue Seattle WA 98122

TOTAL AVAILABLE SPACE – 4,558 RSF

SUITE 240 - 3,459 RSF

SUITE 235 - 1,099 RSF

-  Total Available Space // 4,558 rsf
-  Building Common // 2,807 sf total
-  Leased



visit us at sabey.com

Clete Casper
cletec@sabey.com
206.277.5229

Joe Sabey
joes@sabey.com
206.281.8700



12201 Tukwila International Blvd. 4th Floor
Seattle, WA 98168