

# Riverfront Technical Park 2811 South 102<sup>nd</sup>, Floor 2

***TOTAL AVAILABLE SPACE***

FLOOR 2 - 66,808 RSF



***IDEAL FOR OFFICE, RESEARCH & DEVELOPMENT  
AND CALL CENTERS***



visit us at [sabey.com](http://sabey.com)

Joe Sabey  
[joes@sabey.com](mailto:joes@sabey.com)  
206.281.8700

Clete Casper  
[cletec@sabey.com](mailto:cletec@sabey.com)  
206.277.5229



12201 Tukwila International Blvd. 4th Floor  
Seattle, WA 98168

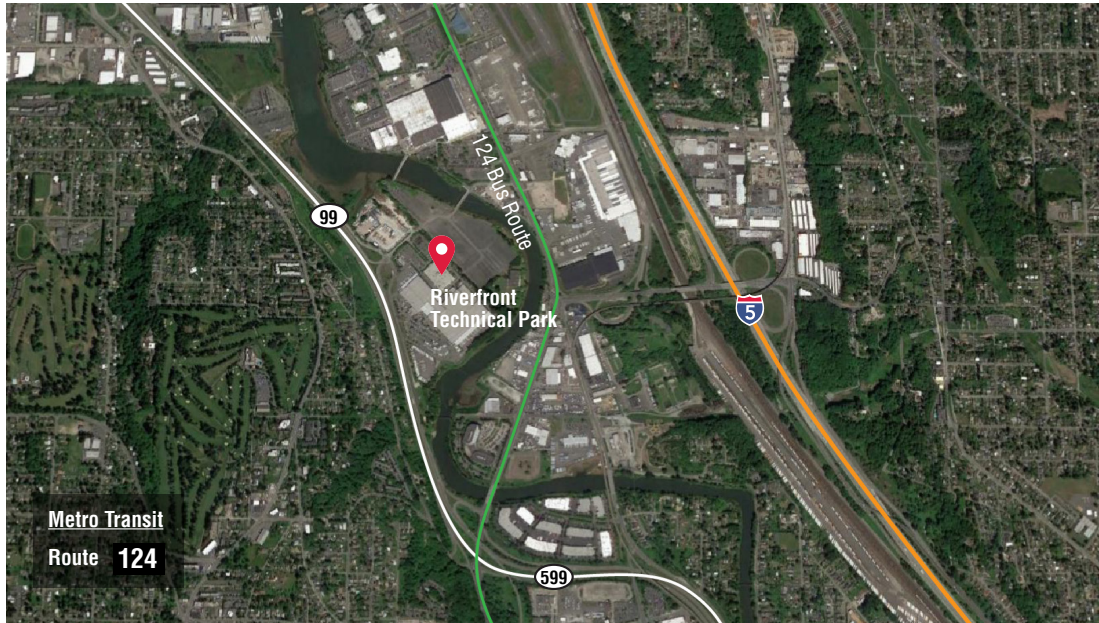


# Riverfront Technical Park

## 2811 South 102<sup>nd</sup>, Floor 2

***TOTAL AVAILABLE SPACE***

FLOOR 2 - 66,808 RSF



Riverfront Technical Park is a 175,000 sf office/flex building located in the South Seattle area, with easy access to I-5, I-405, Hwy 99 and East Marginal Way. Its proximity to Boeing field has made it attractive to the aeronautics industry. In addition to great location, Riverfront Technical Park offers excellent parking and heavy electrical infrastructure making it also ideal for office, research & development and call centers.

### Highlights

- Ample contiguous square footage
- Minutes to downtown Seattle, SeaTac Airport and Boeing Field
- Abundant parking
- Secure card access
- Multiple fiber carriers
- Loading dock
- Immediately adjacent to US Post Office
- Building signage available



***CLOSE PROXIMITY  
TO  
BOEING FIELD***



visit us at [sabey.com](https://www.sabey.com)

Joe Sabey  
[joes@sabey.com](mailto:joes@sabey.com)  
206.281.8700

Clete Casper  
[cletec@sabey.com](mailto:cletec@sabey.com)  
206.277.5229



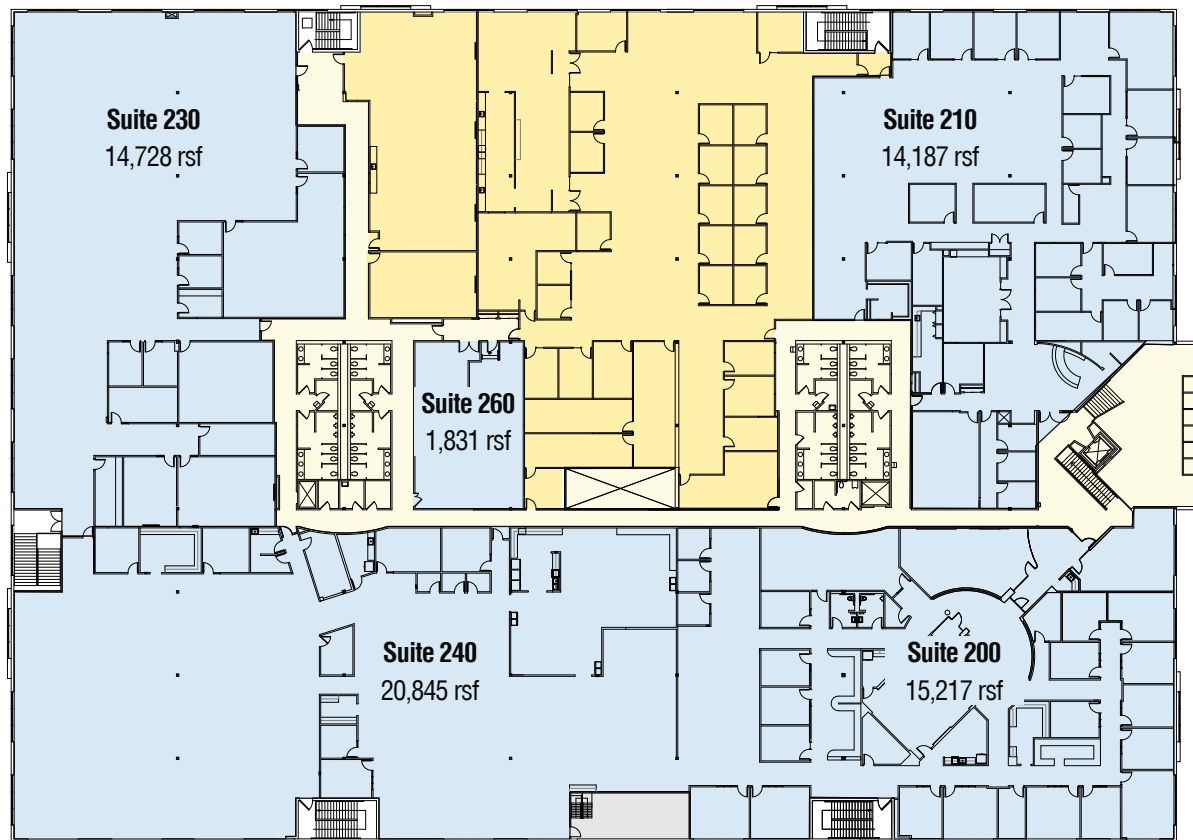
12201 Tukwila International Blvd. 4th Floor  
Seattle, WA 98168

# Riverfront Technical Park

## 2811 South 102<sup>nd</sup>, Floor 2

***TOTAL AVAILABLE SPACE***

FLOOR 2 - 66,808 RSF



**Floor 2 | Available - 66,808 rsf**

■ Total Available Space   ■ Leased   ■ Common Area



visit us at [sabey.com](https://www.sabey.com)

Joe Sabey  
[joes@sabey.com](mailto:joes@sabey.com)  
206.281.8700

Clete Casper  
[cletec@sabey.com](mailto:cletec@sabey.com)  
206.277.5229



12201 Tukwila International Blvd. 4th Floor  
Seattle, WA 98168