

SDC Seattle West  
Building C

12301 Tukwila Int'l Blvd,  
Seattle WA 98168

# High-Capacity Office & Flex Space Designed for Technology-Driven Teams





## Office and flex space offering power, connectivity, and panoramic views.

SDC Seattle West Building C offers high-capacity office and flex occupancy space within the SDC Seattle West campus. Designed for organizations requiring reliability and efficient layouts, the building provides high-power infrastructure, diverse fiber connectivity, and excellent regional access. Panoramic views add to its appeal as a long-term operational home.





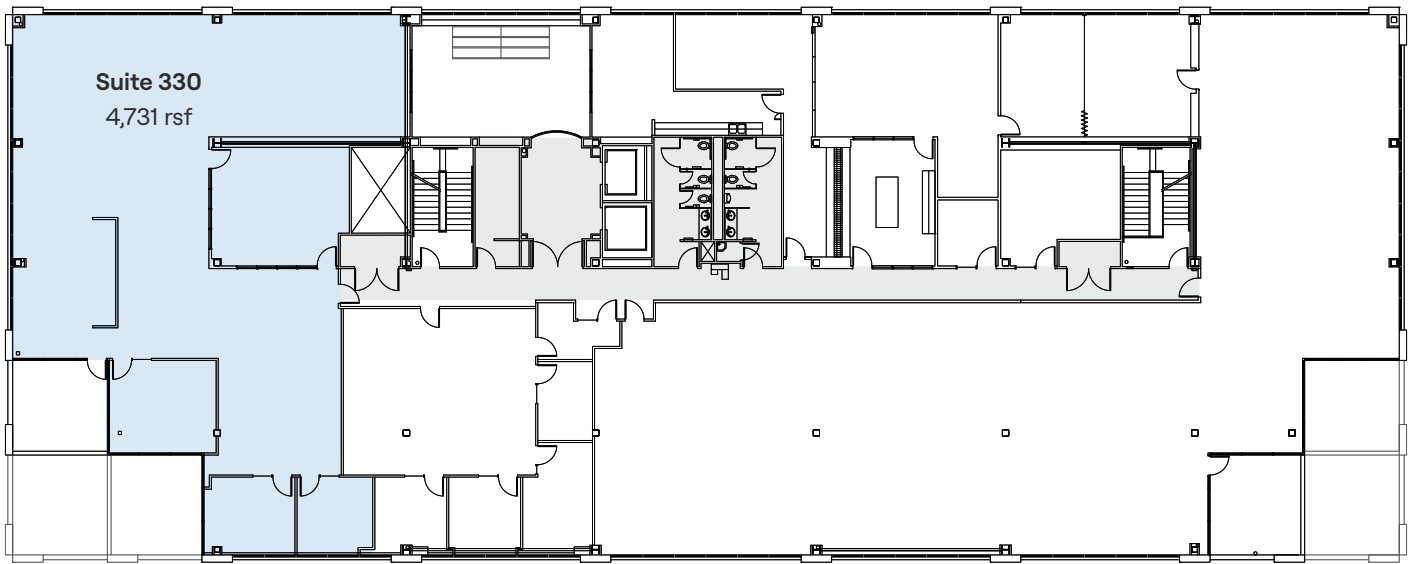
### Highlights

- High-capacity office and flex occupancy space
- High-power infrastructure availability and diverse fiber connectivity
- Floor loading suitable for technology and infrastructure-heavy uses
- Panoramic regional views
- Combination of covered and surface parking options
- Excellent access to SeaTac Airport, Boeing Field, and major highways

# Floor 3

Available Space - 4,731 rsf

-  Total Available Space
-  Common Area



Find Office & Flex Space  
Across Our Portfolio

